

CCMD NEWS SEPT 2022

UPCOMING EVENTS

4770 Horizonview Dr. Colorado
Springs, CO 80925
719-390-7000

Sept 22, 2022 6:00 PM
BOARD MEETING

Visit our website for agenda items!
www.coloradocentre.org

CCMD ADMIN OFFICE WILL BE
CLOSED SEPTEMBER 5TH IN
OBSERVANCE OF LABOR DAY.

CCMD's website is getting a new look.
Stay tuned for changes!

BILLING DATES:

Payment Due – September 12th, 2022

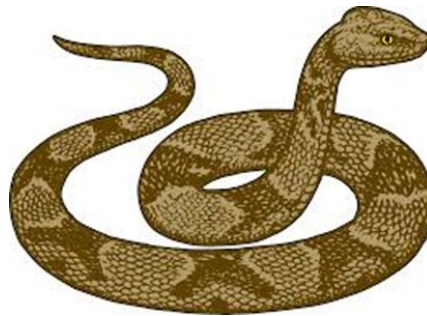
Late Fee Charged – September 26th, 2022

Meter Read Date – September 30th, 2022

SHUT OFF DAY – October 3rd, 2022

\$30.00 Disconnect fee and \$30.00 Reconnect fee

Habitual Offender Additional \$100.00 Deposit Required



>---SNAKE BITE SAFETY---<

Colorado is home to rattlesnakes. In July, there was a fatal rattlesnake bite at Bluestem Prairie Open Space just across Powers from CCMD. Colorado Centre Fire Department then responded to a non-fatal rattlesnake bite within the District in August.

If you encounter a snake, remain calm and back away slowly from the snake. Don't provoke it or try to get it to move away from you. If you are bitten, call 911 and seek medical assistance immediately - do not wait for symptoms to make that call. Stay calm and keep the wound site below the heart level. Remove rings, watches, jewelry, constricting clothes and shoes from the affected limb. It is not recommended to lance the wound site, suction the venom out, ice the wound, or place a tourniquet. These Hollywood maneuvers can actually cause more harm than good.

Snakes are not limited to parks and trails- keep your yard free of clutter and debris, which provides a habitat for snakes, and their food supply- mice and insects. El Paso County Code enforcement encourages residents in unincorporated El Paso County to report weeds in excess of 9" in height and accumulation of rubbish. Citizens may report a violation online: https://epcdevplanreview.com/Applications/Create_Complaint/ or by contacting the Planning and Community Development Department at 719-520-6300.



School is in session! Widefield School District 3 busses CCMD students. Vehicles must stop at least 20 feet before reaching a stopped school bus with red lights flashing and its stop arm extended whether it is on your side of the road, the opposite side of the road or at an intersection. You must remain stopped until the flashing red lights are no longer operating. Wait and watch for children near the school bus and children crossing the roadway before proceeding.

Missing out on important district announcements? Call CCMD today to update your account with an email address!